



REVITALIZE

204 SERIES

❧ OWNERS MANUAL ❧

ADVISORY • SETUP & INSTALLATION
WIRELESS HAND CONTROL • 1 & 14 YEAR WARRANTY

WARNING

Attention: Read the following information before using this product. Failure to use a surge protection device could compromise safety or cause product malfunction and could void the electrical portion of your warranty.

Electrical surges are by far the biggest cause of problems with electrical circuits. In order to help protect your investment, in case of a power surge or outage, use an electrical surge protection device (not included).

WARRANTY WARNING!

Do not open or tamper with the transformer, control box, motors, or remote control (with the exception of battery compartments). The product warranty will be void if these components are tampered with.

SMALL CHILDREN AND PETS

Immediately dispose of all packing materials as they can smother small children and pets. Do not allow any persons or pets under the bed. Children, convalescents, and disabled persons should not operate the bed without adult supervision.

HOSPITAL OR CONVALESCENT USE DISCLAIMER

Adjustable beds are designed and engineered for a lifestyle of in-home comfort and are not intended for hospital use for a bed-ridden patient on extended recovery. Adjustable beds are not equipped with bars to help patients get safely in and out of the bed and are not intended to be used around tent-type oxygen therapy or explosive gases.

PRODUCT RATINGS

The bed lift motors are not designed for continuous use of more than 2 minutes in an 18-minute period, or approximately 10% duty cycle. Any attempt to circumvent or exceed this rating will shorten the life expectancy of the product and may void the warranty.

WEIGHT UNITS

The limitation for this adjustable bed is 750lbs. The bed will structurally support this weight if it is evenly distributed across the head and foot sections. This product is not designed to support or lift this amount in the head or foot section alone. Exceeding this weight restriction could damage the bed and/or cause injury and void the warranty. Enter and exit the bed in a flat position and do not sit on the head or foot sections while in the raised position.

LIFTING AND LOWERING MECHANISMS

It is normal for the raising and lowering feature on the bed to emit a minimal humming sound during operation.

TO REDUCE THE RISK OF SHOCK, BURNS, FIRE, OR INJURY

Make sure the base is in a flat position before unplugging it from the power source. Always unplug the base from the electrical outlet before cleaning or servicing the base. If the cord or plug is damaged, discontinue use of the bed base and contact qualified service personnel for examination and repair.

FCC COMPLIANCE

This device complies with Part 15 of the FCC Rules for residential use. Operation is subject to the following two conditions: (1) this device may not cause harmful interference, and (2) this device must accept any interference received, including interference that may cause undesired operation. Radio Frequency: 2.4 GHz.

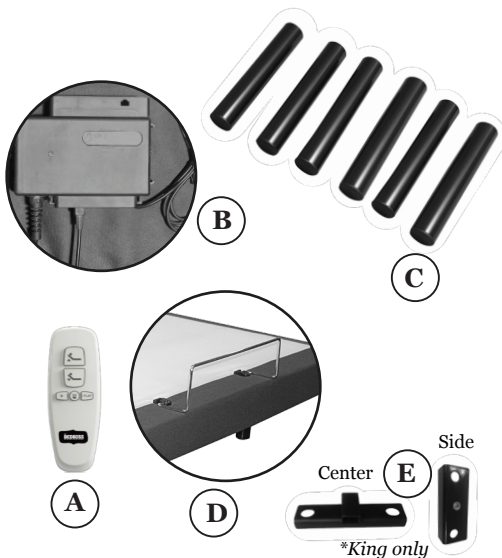
SETUP AND INSTALLATION

Important: We strongly recommend two able-bodied adults setup and assemble this product.

⇒ STEP 1 ⇒

Check and verify all parts are included before discarding any packaging materials. All electronics and components that need to be installed are located in boxes under the bed base or attached to the frame. *Check for bag of hardware for Twin XL, Full, and Queen.*

- A) Wireless Remote (1)
- B) Control Box with Transformer and Power Cord (1)
- C) Legs (6)
- D) Mattress Retaining Bar (1)
- E) Center and Side Connector Brackets (*King only*)



⇒ STEP 2 ⇒

With the help of your able-bodied assistant, place adjustable box on floor with arrows pointing downward.

NOTE: Turn to page 5 now for King special instructions.

⇒ STEP 3 ⇒

Install (C) six legs firmly into the base of the frame. The legs screw into the threaded holes in each corner of the frame. (*See Figure 1.*) Do not overtighten.

⇒ STEP 4 ⇒

Skip to Step 7 if assembling Twin XL, Full, or Queen. Connect plugs to control box as shown for King. (*See Figure 2.*) Do not throw away the clip piece. Remove the clip piece, connect the plugs, then replace the clip piece.

⇒ STEP 5 ⇒

Locate (A) wireless remote and insert two AAA batteries (included).

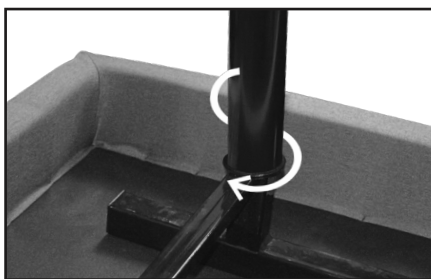


Figure 1

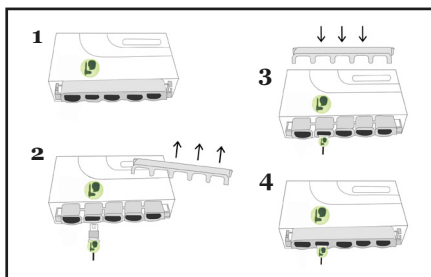


Figure 2

⇒ STEP 6 ⇒

Secure base stability by locking hinge joints on bed frame using (1) bolt, (1) flat washer, (1) lock washer, and (1) nut for each hinge joint as shown. Ensure that ALL nuts and bolts on hinge joints are tight. (See Figure 3.)

NOTE: Twin XL has 2 hinge joints. Full and Queen have 3 hinge joints.

⇒ STEP 7 ⇒

Plug (B) Control Box Power Cord into a grounded electrical outlet. Using (A) Wireless Remote, push the HEAD UP button for a momentary test of the remote. (See Figure 4.)

If the adjustable bed responds to the remote, skip to Step 8.

⇒ STEP 8 ⇒

If the adjustable bed does not respond to the remote, synchronize (A) Wireless Remote with (B) Control Box. First find (B) Control Box mounted in the mid-section of the bed frame. Press the HEAD UP and HEAD DOWN buttons simultaneously on (A) Wireless Remote, then press the RESET button on the side of (B) Control Box or the control box extension cord. (See Figure 5.) You will hear some quick beeping sounds. The adjustable should be working after matching the remote to the control box. Press the HEAD UP button to test. The RESET button can be used for emergency flattening of the adjustable bed. Pressing the RESET button levels the bed.

⇒ STEP 9 ⇒

With the help of your able-bodied assistant, carefully lift the bed frame and set it upright on its legs. Excessive lateral pressure may damage the legs. Remove all plastic protective covering.

NOTE: Make sure to clear all power cords so that they do not interfere with any mechanisms of the adjustable bed. Dispose of plastic protective coverings to avoid injury.

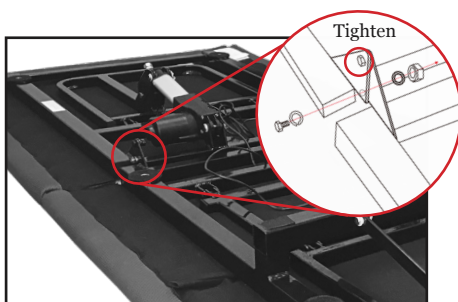


Figure 3



Figure 4

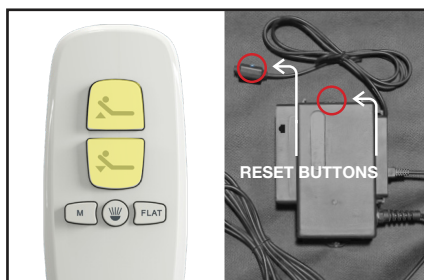


Figure 5

⇒ STEP 10 ⇒

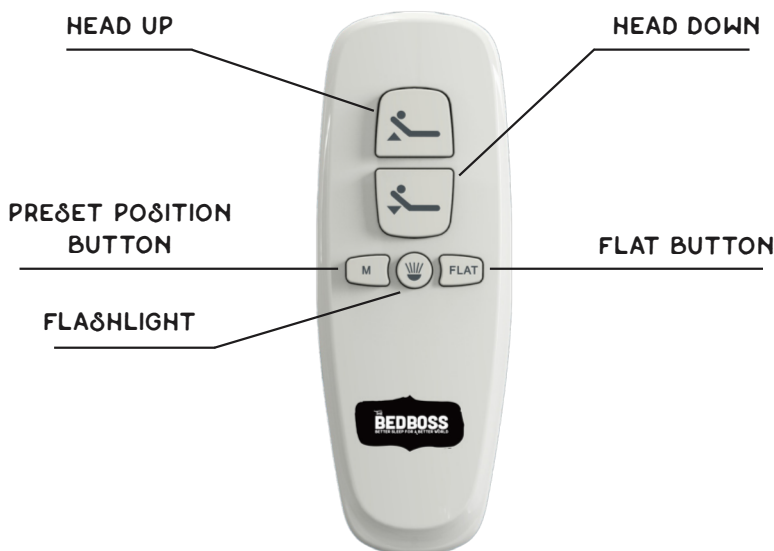
(D) Mattress Retaining Bar is mounted upside down for shipping purposes only for Twin XL, Full, and Queen. For King, it is attached to the bottom of the foot unit. Remove (D) Mattress Retaining Bar from the foot of the adjustable and turn the bar upright. Reinstall by carefully aligning and pulling the bar into place. (See Figure 6.)

NOTE FOR TWIN XL ADJUSTABLE: Turn to page 4 for special instructions.



Figure 6

❧ WIRELESS HAND CONTROL ❧



Head Up — Raises the head of the bed base.

Head Down — Lowers the head of the bed base.

Flashlight — Turns light on the remote on and off.

Flat Button — Press once to return the bed base to flat position.

Preset Position Button

1. Press the Flat Button to level the bed.
 2. Adjust the head to desired position.
 3. Press and hold Preset Position Button M until the control box beeps.
- The position is now memorized. You can reset the buttons by repeating the above steps.

TWIN XL INSTRUCTIONS

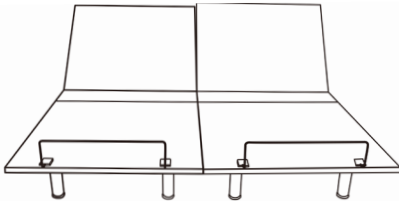
USING ONE REMOTE TO CONTROL SIDE-BY-SIDE BASES

The bed base is designed to allow two Twin XL bases to function together as a King base. You can use one wireless remote to control two side-by-side bases by synchronizing the remote with the control box of each base. *(See Step 8 of Setup and Installation.)*

WHEN TWO SIDE-BY-SIDE BASES DO NOT ALIGN

On the higher base of the two, use a wrench to turn both nuts counterclockwise to lower the angle until the higher angle base matches the level of the lower angle base.

HIGHER ANGLED BASE

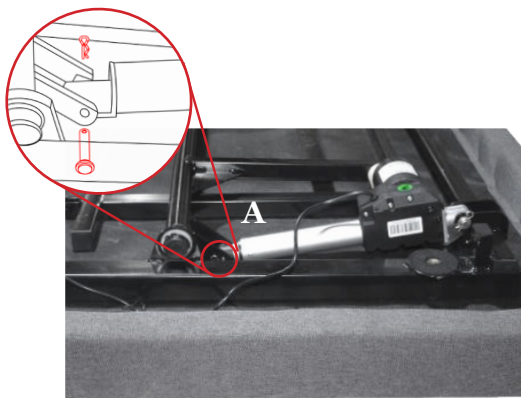


KING INSTRUCTIONS

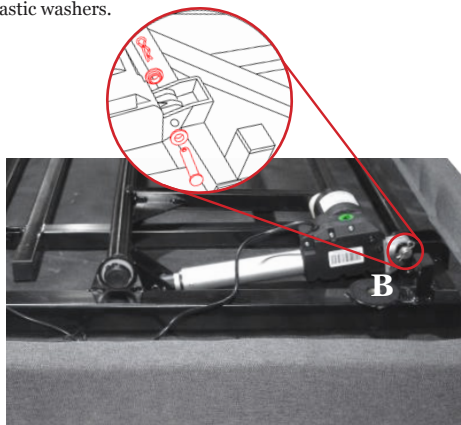
ATTACHING THE MOTOR

Attach uninstalled motor(s) to bed frame using (2) bolts, (2) flange washers, (2) flat washers, and (2) pins for each motor as shown below.

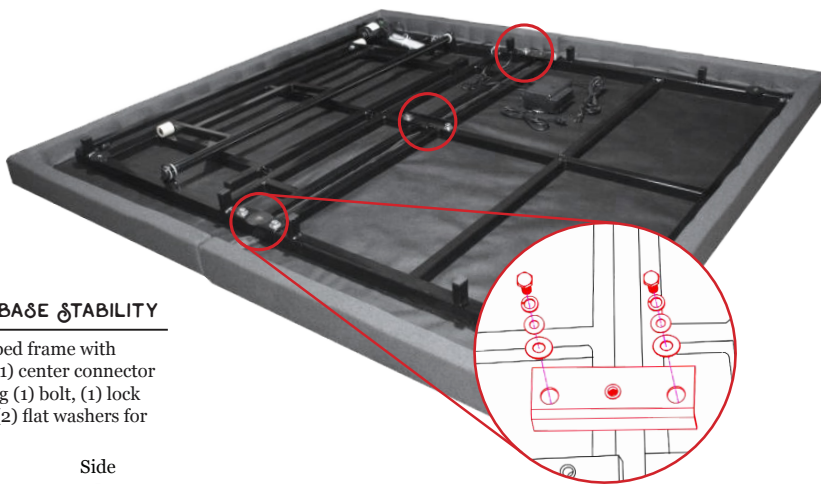
NOTE: Bolts, flange washers, flat washers, and pins come pre-installed. To attach motor, remove bolts, washers, and pins, position motor, and reattach bolts, washers, and pins. Do not discard plastic washers.



1. Attach side A side of motor.

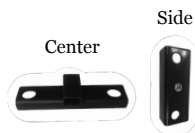


2. Attach side B of motor.



SECURING BASE STABILITY

Secure King bed frame with (2) side and (1) center connector brackets using (1) bolt, (1) lock washer, and (2) flat washers for each bracket.



THE BED BOSS® - 1 & 14 YEAR LIMITED WARRANTY

Congratulations on the purchase of your new adjustable bed base from THE BED BOSS® covered by the best warranty from THE BED BOSS®.

THE BED BOSS® warrants the product only to the original purchaser only for residential use from manufacturing defects for a period of 15 years from Date of Purchase. The warranty covers the adjustable bed base product only. The Purchaser is responsible for all shipping costs to THE BED BOSS®. DO NOT SHIP THE PRODUCT TO THE BED BOSS® WITHOUT FIRST CONTACTING THE BED BOSS® FOR INSTRUCTIONS. DO NOT RETURN THE PRODUCT TO THE RETAILER WHERE YOU PURCHASED IT.

This warranty covers manufacturing defects only. Damage to the product caused by abuse, misuse, or not properly following the care instructions will void the warranty. THE BED BOSS® is not responsible for any incidental or consequential damages resulting from the use of its products. The responsibility of THE BED BOSS® shall not exceed the purchase price of the warranted product. This warranty will only be honored when accompanied by a copy of the original proof of purchase from an authorized retailer, reseller, or distributor. This warranty is not available where the adjustable bed base is used for commercial, institutional, or rental purposes.

PRODUCT WARRANTY REGISTRATION

Product registration must be completed within 90 days of purchase. Registration of the product online entitles the original purchaser to an additional 1 year of full warranty coverage as outlined below for a total period of 2 years from date of purchase. Visit www.thebedboss.com to complete the warranty registration process. Provide complete contact information. Choose "Warranty Registration" as the contact reason. Attach an image of the original purchase receipt. Submit.

THE BED BOSS® reserves the right, upon the presentation of a product covered by the warranty, to repair or replace with the same. In the event that a particular product is no longer manufactured, THE BED BOSS® shall have the right to replace the product with a substitute product that most nearly resembles the warranted item.

1 YEAR FULL WARRANTY

This adjustable bed base and its motor system are warranted against defects in the workmanship or materials for a period of 1 year from the date of purchase. Upon written notice during the first year after the date of purchase, THE BED BOSS® will provide a replacement part (at no cost to the purchaser) for any defective adjustable bed base part and/or motor system. When the adjustable bed base and/or motor system at hand is found to be DAMAGED, not DEFECTIVE, all costs incurred to inspect and/or correct the issue will be the financial responsibility of the purchaser. If a service call is requested by the purchaser within the first year to complete a diagnostic or repair, a fee of \$100 will be charged to the purchaser and will be due and payable prior to service. Year 2: \$200. Year 3-15: \$300.

14 YEAR LIMITED PARTS WARRANTY

Upon written notice during the second year through the fifteenth from the date of purchase, THE BED BOSS® will replace, upon terms and conditions set forth in this paragraph, any mechanical bed base part found to be defective. This limited warranty shall not apply unless the defective part is returned to THE BED BOSS® according to the direction of an THE BED BOSS® representative. The purchaser will pay all service and transportation costs related to the replacement of the defective part and is required to pay 1/14 of the current replacement cost of the parts times the number of year used.

ADDITIONAL TERMS AND CONDITIONS

This warranty does not apply: (a) to any damage caused by the purchaser; (b) if there has been any repair or replacement of adjustable bed base parts by an unauthorized person; (c) if the adjustable bed base has been mishandled (whether in transit or by other means), subjected to physical or electrical abuse or misuse, or otherwise operated in any manner inconsistent with the operation and maintenance procedures outlined in the Owner's Manual and this warranty; (d) to damage to mattresses, fabric, cables, electrical cords, or items supplied by dealers (contact the dealer for warranty information on these items); (e) if there has been any modification of the adjustable bed base without prior written consent by THE BED BOSS®; (f) to costs for service calls, including but not limited to costs for service calls solely for the purpose of educating the consumer about the adjustable bed base, service calls for the replacement of defective parts under the manufacturer warranty, or service calls which find an unsatisfactory power connection; (g) if the recommended weight restriction is not followed (refer to the advisory section of this manual), the warranty will be void. Repairs to or replacement of an adjustable bed base or its components under the terms of this limited warranty will apply to the original warranty period and will not serve to extend such period. The decision to repair or to replace defective parts under this warranty shall be made, or cause to be made, by THE BED BOSS® at its option and in its sole discretion. Repair or replacement shall be the sole remedy of the purchaser. There shall be no liability on the part of THE BED BOSS® for any special, indirect, incidental, or consequential damages or to any other damage, claim, or loss not expressly covered by the terms of this warranty. This limited warranty does not include reimbursement for inconvenience, removal, installation setup time, loss of use, shipping, or any other costs of expenses, THE BED BOSS® and/or its service technicians shall not be responsible for moving furniture or any other items not attached to the adjustable bed base in order to perform service on the adjustable bed base. It is the sole responsibility of the purchaser to provide adequate space and accessibility to the adjustable bed base. In the event that the technician is unable to perform service due to lack of accessibility, the service call will be billed to the purchaser and the service will have to be rescheduled. THE BED BOSS® makes no other warranty expressed or implied, and all implied warranties of merchantability and fitness for a particular purpose are disclaimed by THE BED BOSS® and excluded from this agreement. Some states do not allow the exclusion or limitation of incidental or consequential damages, so the above limitation or exclusion may not apply to every purchaser.

Distributed by THE BED BOSS®
99 Textile Lane
Chattanooga, TN 37419